

Dudley Christmas Support 2025.

Dudley Council Christmas Opening Times and Emergency Contacts -

<https://www.dudley.gov.uk/media-centre/communications/christmas-opening-times-and-emergency-contacts/>

Life Central Church are having a Christmas Day meal for people who may be alone or struggling financially. More information / bookings at this [link](#)



Community Christmas
by Shared Table Co.

27/12/2025 - 12pm-4:30pm Holy Trinity Church, Wordsley
High St, Wordsley, Stourbridge DY8 5RU

A **free** event for those who are **lonely,**
or low income this Christmas.
Let's make new memories **together.**

Expect; A **free hot meal** (first come first served), gifts for
children, retro Christmas atmosphere, (think tinsel,
Christmas songs and great company).
All welcome.

We'd like to ensure we can cater for as many people as
possible so if you are able please email
kelly@g5-group.co.uk to confirm your attendance or ask
questions.
If you are unable to email please still feel free to attend.



FREE HOT FOOD

Join us for a warm meal, **community connection**,
and a friendly atmosphere for all who need it.

LOCATION: STOURBRIDGE TOWN CENTRE (BY THE CLOCK)

TUESDAY 23RD DECEMBER 2025
6PM TO 9PM



EVERYONE WELCOME, NO CHARGE, NO JUDGEMENT

- Beef stew
- Vegetable soup
- Snacks
- Tea, Coffee & Soft drinks

Where kids can eat for cheap or free during Christmas holidays

<https://capuk.org/news-and-blog/where-can-kids-eat-free-or-cheap-this-christmas>

<https://www.moneymagpie.com/save-money/where-can-kids-eat-for-1-or-less-this-holiday>

<https://moneysavingcentral.co.uk/kids-eat-free>

Dudley Safe & Sound

Even at Christmas it's important to stay safe. Dudley Safe and Sound's Christmas safety tips campaign encourages people to look out for illegal money lenders and online frauds. They also highlight the increased risk of domestic abuse and the fact that children and young people can

become the 'forgotten victims' of domestic abuse. You can access the website to find out more and share the advice with friends and family. <https://www.dudleysafeandsound.org/christmassafety>

White House Cancer Support

For anyone affected by cancer and particularly those who may receive a diagnosis over the Christmas period and need assistance with their mental health, we will be providing telephone support between 9am – 5pm on 29th, 30th and 31st December and the 2nd of January. Details/contact numbers are available on our website www.support4cancer.org.uk

Stop Loan Sharks

At this time of year people can be tempted by loan sharks as they struggle for cash to cover the expense of the season. This makes it easier for lenders to exploit people with a small loan to tide them over Christmas, but it ends up costing borrowers much more financially and having a huge impact on their lives.

Loan sharks will act like friends and make the offer seem hard to resist, but very quickly the situation can spiral out of control and borrowers can be subjected to threats, violence and intimidation.

Loan sharks can be reported confidentially by calling Illegal Money Lending England on 0300 555 2222 or by emailing reportaloanshark@stoploansharks.gov.uk

Scams

We are all vulnerable to scams. People young and old experience scams and anyone can be tricked by them. We can all benefit by learning more about scams.

Trading Standards works with scam victims in Dudley Borough, to raise awareness, improve reporting of scams and stop financial abuse.

<https://www.dudley.gov.uk/business/trading-standards/rogue-traders-and-scams/scams/>

If domestic abuse means home isn't your safe place, we can help

Some families are facing a tough Christmas, because of domestic abuse. Safe & sound Dudley's community safety partnership and Dudley Safeguarding People Partnership work hard to support victims. For help and support call Dudley Borough Single Point Of Contact (SPOC) on 01384 455411 (24 hours) or text/WhatsApp 07384 466181 (9am - 9pm weekdays).

You can also LIVE CHAT with the SPOC team by [visiting their website](#) – just look for the chat icon on the left hand side of the screen. Web chat is open Monday to Fridays, 10am to 2pm, except on bank holidays.

In an emergency dial 999, if it's too dangerous to speak press '55' when connected and the operator will know you need help

For more information on domestic abuse including the signs to look out for in family and friends visit our [help hub](#).

Mental Health Support

<https://www.dudley.gov.uk/council-community/cost-of-living/mental-health-wellbeing/>

Suicide Prevention Support

<https://www.dudley.gov.uk/council-community/cost-of-living/mental-health-wellbeing/managing-suicidal-thoughts/>



LET'S KEEP TALKING

However you're feeling right now, things can get better

Talk to someone about it

Place your camera phone over the QR Code for it to take you to the Reach Out Dudley website

CALL: People of all ages across the Black Country can access local mental health crisis services 24/7 directly, by calling **111** and selecting **option 2**

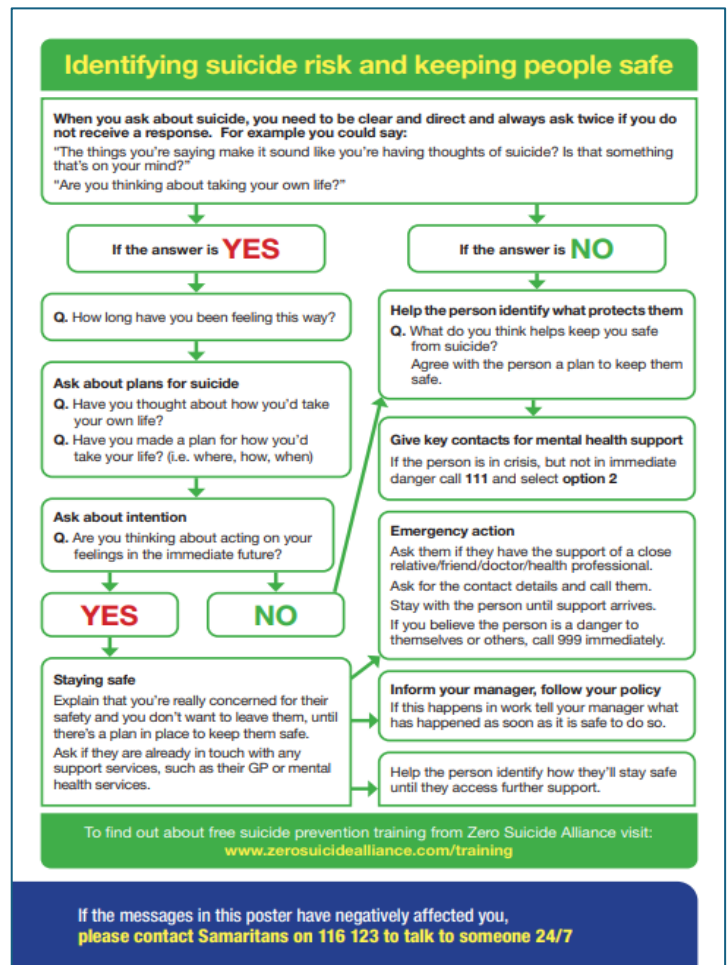
CALL: Samaritans **116 123** to talk to someone 24/7

TEXT: 'SHOUT' to **85258** for free support 24/7

VISIT: www.reachoutdudley.co.uk for details of Mental Health & Wellbeing Services

Dudley **HealthyDudley** **reach out**

If the messages in this poster have negatively affected you, please contact Samaritans on 116 123 to talk to someone 24/7



Stay Connected: Lonely or isolated

The winter months can be long and lonely for many people. This is especially true for older people or those with a disability or long-term health condition. This is why it is important to check in on others and ensure they are warm and safe this winter.

It is helpful to keep ourselves busy. For information on thousands of activities, services and events across the Dudley borough, take a look at the [Dudley Community Information Directory](#).

Our [Pleased to Meet You](#) scheme offers short-term support to people feeling lonely. Our helpline offers a friendly chat, or the chance to find out about help in the local area, including lots of support options to help you to stay independent, healthy and well. Telephone [01384 812761](tel:01384812761) Monday to Friday, 9am to 4pm.

You can find more information on how you can stay connected on [Healthy Dudley](#), Dudley Council's Public Health page.

Dudley Carers Hub

Caring for a family member, friend or neighbour this winter? It is important that carers look after themselves during the winter months, as well as the person they care for. [Dudley Carers Hub](#) offers practical help, advice and information to unpaid carers of all ages. Telephone [01384 818723](#).

Winter Wellbeing

Cold weather can bring many challenges to our health and wellbeing, especially if you need extra help during winter. There are lots of things you can do to get prepared for the season. Here you will find information and advice, help and support on keeping safe and well in winter.

<https://www.dudley.gov.uk/residents/care-and-health/adult-health-and-social-care/support-to-live-independently/winter-wellbeing/>

Christmas and New Year Pharmacy Opening Times

<https://blackcountry.communitypharmacy.org.uk/our-news/christmas-and-new-year-pharmacy-opening-times/>

NHS: Find the right service for you

As temperatures drop and nights draw in, it's important to remember that winter conditions can seriously affect your health. The NHS is here for you, and our local health and care professionals are ready and available to help you this winter. Think which service is right for you:

<https://blackcountry.icb.nhs.uk/your-health/find-right-service-you>

Cost of living support (not emergency service)

Please visit the cost-of-living website for lots of information regarding cost savings

<https://www.dudley.gov.uk/council-community/cost-of-living/>

If you are struggling financially, search through the **Household Support Fund Page**

<https://www.dudley.gov.uk/council-community/cost-of-living/household-support/>

Please also check your local Social Media pages for further community events.